



# In Touch

ALL THE NEWS FROM IPSWICH RUGBY FOOTBALL CLUB

## Welcome!

Welcome to the Christmas issue of In Touch. In this issue we feature an interview with Ipswich Rugby Club stalwart Terry Mullett, a profile of our resident referee Stu Hudson and photographs from the annual sponsors' lunch held on 19th December at Humber Doucy Lane.



Last week In Touch met with Stu Hudson our resident referee "blind as bat" and the Youth and Juniors Co-ordinator. Over a cup of coffee in Costa Coffee Stu told me about his hopes for Ipswich Rugby Club and how he came to be involved with the club in the first place.

Stu has been involved with the club for over twenty years when he first played in the First XV as flanker before joining the Second XV and becoming their captain, Stu learned to play rugby at Coppleston High School and Northgate Sixth Form College. As with a lot of ex-players Stu's playing career ended because of a knee injury at the age 37, so then Stu took up refereeing.

Stu is qualified to referee all age groups, although he mainly referees youth games. He has also been known to officiate at the odd veterans match when required. Through his sons who play for the U12's and U13's Stu became involved with coaching, and now coaches the U12's. If this was not enough, Stu along with Dave Edwards, runs the Youth and Juniors in the role of Youth and Juniors Co-ordinator.

Recently the Youth and Juniors Section was in an organisational mess. Stu and Dave bravely decided to try and sort it out by taking over responsibility for the section. Over the next year as the organisation of the section improves Stu intends to take a step-back and return to his passion which is coaching.

Stu's vision for the Youth and Juniors section is to have a player development process whereby children learn the core values and skills of rugby whilst having fun. The ultimate aim is for youth players to go on to play at a higher level with the First XV, or for another club, such as with Robbie Kalbraier with Blaydon RFC.

Away from rugby, Stu was until recently a DCI with the Suffolk Constabulary. Following his retirement last year he now works with young offenders. Stu is married to Rachel and he has four sons, William and Edward who play for the U13's and U12's respectively, young Fred who will be joining the U7's next season, and Stu's oldest son Ben who is also a police officer, and plays for the Second XV. It is safe to say that rugby plays a large part in Hudson family life.

Kate Hughes



## Mayor of Ipswich attends Sponsors' Lunch

The annual Sponsors' Lunch still went ahead even though there was no match on Saturday due to the white stuff.

# First XV news



Coach Aaron Brown with Club President Karl King

## Sponsors' Lunch 19th December 2009

Ipswich Rugby Club played host to over 80 sponsors, vice presidents and players at the annual Sponsors' Lunch held on 19th December.

Amongst those attending was Graeme Kalbraier the club's main sponsor and Mr David Goldsmith Mayor of Ipswich. The lunch was hosted by Malcolm Harbour, club chairman and club President Karl King entertained us with an amusing and enlightening speech.



A full house



Club sponsor Graeme Kalbraier with Vice Chairman Richard Goodall

## Match Report 12th December 2009

Colchester 30 Ipswich 7 by David Broughton

Ipswich kicked off against the wind in this local derby fearing nothing and having confidence to cause an upset on Colchester's home turf.

Despite Colchester having the strong breeze in their favour for the first half it was Ipswich who enjoyed the earlier possession, with quick ball from a ruck the backline broke left finding flyhalf Sam Corston with a gaping hole in the Colchester defence leaving the Colchester winger floundering, Corston flew down the wing before touching down under the posts for the try. Sam also kicked the conversion for a 7 point lead in 4 ? minutes of play. (0-7).

Within 10 minutes of play Colchester were back on equal terms when fullback Pete Smith showed his pace, collecting a clearance kick side stepped and ran around the Ipswich defence to score under the posts. Wiggins Converted. (7-7).

Ipswich continued to take the game to Colchester making good headway into

the hosts half, only the final pass and deliberate slowing down of the ball at the breakdown prevented any decent scoring opportunity. Whilst the referee was on top his game and awarded many penalties to Ipswich they were just outside Corston's range for points. From the kick to touch and resultant lineout the Colchester defence had re-aligned.

Midway through the first half from another Ipswich attack the ball was turned over and again the quick vision of the Colchester backline kicked the ball over the Ipswich backline for Colchester's Bramble to chase and gather before crossing the line in the left corner against the run of play. The Conversion was missed. (12-7).

With only 10 minutes of the first half left to play, Colchester went further ahead,

when Ipswich were penalised for being offside just outside the 22. The kicker was successful with the 3 points on offer. (15-7).

The second half got under way with Ipswich still looking to turn possession into points, however it was poor kicking that allowed Colchester to again counter attack at pace, resulting in Ipswich chasing back to defend getting caught offside well within the range of Colchester kicker Wiggins. (18-7).

Ipswich pressed forward and after a succession of penalties for illegal hands in the ruck and slowing down the ball the Ipswich forwards were camped 5 metres from the Colchester tryline. A rolling maul was set-up and crossed the tryline for Louis Pentelow to touchdown; unfortunately for Ipswich the referee was unable to see the score and judged the ball to have been held up, another scoring chance went begging.

The rest of the half was played with attack and counter attack, with Ipswich again having much of the possession and opportunities to score but for the final pass, until the final 10 minutes of the game.

Through ill discipline, Ipswich on the attack deep inside the Colchester half, Ipswich were penalised for pushing a player without the ball, Colchester took a quick tap and passed out wide for Pete Smith to again demonstrate his pace and race up the field unopposed to score under the posts for a converted try. (23-7).

Ipswich continued to push forward put again were punished for allowing loose ball to be gathered up by the home side and counter attack at pace, again fullback Smith scoring under the posts for a converted try in the last play of the game. The score line will flatter Colchester, but the 23 points difference in this encounter certainly doesn't reflect how the game was played.

## First XV news continued



### League Table - London 2 North East

	P	W	D	L	PF	PA	PD	Pts
Thurrock	11	10	0	1	415	86	329	20
Sudbury	11	7	1	3	274	165	109	15
Romford & Gidea Park	11	7	1	3	227	214	13	15
Colchester	11	7	0	4	310	190	120	14
Braintree	11	7	0	4	201	183	18	14
Saffron Walden	11	7	0	4	234	246	-12	14
Enfield Ignatians	11	5	0	6	146	222	-76	10
Norwich	11	3	1	7	211	195	16	7
<b>Ipswich</b>	<b>11</b>	<b>3</b>	<b>1</b>	<b>7</b>	<b>139</b>	<b>264</b>	<b>-125</b>	<b>7</b>
Chelmsford	11	3	0	8	174	241	-67	6
Harlow	11	3	0	8	155	252	-97	6
Mersea Island	11	2	0	9	118	346	-228	4

### Match Report

19th December 2009

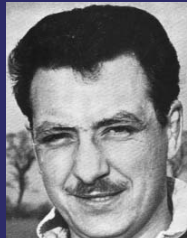
On Thursday prior to the match, a snow storm covered Ipswich and Humber Doucy Lane with a blanket of snow. Ipswich was prepared to go ahead with the match and roped in First XV players, club officials and a snow blowing machine on Saturday morning to clear the pitch. However adverse driving conditions forced Norwich RFC to cancel the match.

The match has been rearranged for Saturday 2nd January.

### Next First XV Match

2nd January **Home to Norwich.**

### Interview with Terry Mullett



Terry Mullett has been a stalwart of Ipswich rugby club for 55 years. During that time he has been player, captain, supporter, vice-president and president twice. It safe to say there isn't much about Ipswich Rugby Club that Terry doesn't know.

He first played rugby at Northgate Grammar School when he would play for the school on a Saturday morning and then turn out in the afternoon for a YMCA team. During his national service with the RAF Terry captained his station's side at the age of 18? the only time he got to tell his officers what to do! On completing national service Terry joined Ipswich Rugby Club in 1954. He chose Ipswich because he had friends who already played there.

When Terry joined, the club played at Bourne End and shared a ground and facilities (comprising two showers for both teams) with the YMCA. Club HQ in those days was the Crown and Anchor Hotel in town which is now WH Smiths. In 1958 the club bought the 11 acres at Humber Doucy Lane for £1000 and

moved into a new purpose built facility. Terry firstly played for the Third XV before moving up and playing for the Seconds and then the First XV in 1955. Even though Terry was a second row player he didn't sustain any serious injuries, and carried on playing rugby until he was 46. In 1970, during the club's centenary year Terry was club captain. By 1974 he had moved through work to Lincolnshire, and as he couldn't bear the thought of hanging his boots up he joined Lincoln Rugby Football Club where he became captain of the second XV, club coach, and chairman of selectors.

On his return to Ipswich, Terry once more became involved with the club and he was invited to be President in 1981, and yet again in 1995, the club's

125 anniversary year. Terry has also been involved with rugby at the county level both as a player and as a member of Suffolk RFU committee and the Eastern Counties committee.

Terry has seen many changes to rugby. When he started playing all matches were "friendlies" - there were no leagues, only cup competitions. Ipswich used to regularly play big London clubs' second XVs such as Saracens and London Irish at Humber Doucy Lane.

Terry's other passion is shooting and he now spends a lot of his free time organising a shooting syndicate. Terry is a grandfather and a great-grandfather, and his love of rugby has passed on to grandson Martin who plays for the Second XV.

# Youth & Juniors news

**U10's at home to Shelford** 22 November 2009

Ipswich U10's played some good rugby against a strong opposition. In the B team the players did outstandingly well, particularly up front.

The forwards worked hard in the breakdown in getting the ball out fast providing the backs with sufficient ball to stretch their legs. A welcome return of Elliot Rayment after undertaking a low cost facelift with his BMX saw him add vital dynamism and strength to our back row which allowed William Wells good ball in his first effort as scrum half. Other players who stood out included Henry Steers whose direct running and strong mauling again provided good

ball to allow the backs to enjoy themselves. It will be good to see whether those three players can repeat their strong performance in the A team having received their call up against Colchester this week.

The A team had a tough time. The Shelford forwards all looked like they had been fed sugar beet for most of their lives and as such dominated the close contact areas of the match which

never allowed our half backs time to release the ball. As such the backs spent most of the matches on the back foot defending which they did well enough to restrict the winning scores in each match to only one try difference. They did however stitch some good runs together allowing Don Baker to get a fine individual try in one of the matches.



## U13's Spotlight

The Under 13 squad has nearly 40 boys, a committed and well qualified coaching team led by Dave Edwards, and a very supportive group of parents including Team Manager Martin Taylor.

This season has started with two squads at the Suffolk 7's tournament; the 'Wasps' team beating Stowmarket, Felixstowe and Woodbridge on their way to the Plate Final where they narrowly lost to Southwold, and the 'Tigers' team battling through to narrowly lose to their arch rival Colchester in the Cup Semi-Final.

October saw a focus on training, helped by Aaron and some of the first team squad leading a memorable session early in November. As well as club training, eight of the squad enjoy coaching at the Eastern Counties prestigious 'School of Rugby' once a month; these boys will go on to compete for representative places in the Eastern Counties U14 team next season.

Until then December saw a return to action in club colours with a big win

against Bury, which many of the boys and their parents went on to celebrate at the Club Vice Presidents' Lunch.

The hard work in training has paid off with representative honours for two of the squad who have been selected for the elite 'Prep Schools Barbarians' team, and a further two who have been part of the Northampton Saints Elite Player Development Group since the summer.

January will see the start of the boys' first Suffolk Cup campaign where they aim to continue last seasons winning ways in competitions, and a list of friendly fixtures taking them from Lowestoft to Cambridge.

For some of the boys this is their eighth season at Ipswich, others are new to the club, and to the game, but

whatever their experience or ability the coaches and management team are dedicated to ensuring everyone has an enjoyable rugby experience and the support to reach their potential.

Source: Spencer Smith



Eight of the Ipswich U13's squad are members of the prestigious Eastern Counties School of Rugby

# Ref's Corner

Continuing on from last time our friendly referee "blind as a bat" explains the laws governing tackles.

## Law 15

### Tackle: Ball carrier brought to ground.

#### Definition: Tackle

A tackle occurs when the ball carrier is held by one or more opponents and is brought to ground.

A ball carrier who is not held is not a tackled player and a tackle has not taken place. Opposition players who hold the ball carrier and bring that player to ground, and who also go to ground, are known as tacklers. Opposition players who hold the ball carrier and do not go to ground are not tacklers.

### 15.1 Where can a tackle take place?

A tackle can only take place in the field of play.

### 15.2 When a tackle cannot take place

When the ball carrier is held by one opponent and a team-mate binds on to that ball carrier, a maul has been formed and a tackle cannot take place.

### 15.3 Brought to the ground defined

(a) If the ball carrier has one knee or both knees on the ground, that player has been 'brought to ground'.

(b) If the ball carrier is sitting on the ground, or on top of another player on the ground the ball carrier has been 'brought to ground'.

### 15.4 The Tackler

(a) When a player tackles an opponent and they both go to ground, the tackler must immediately release the tackled player.

**Penalty:** Penalty Kick

(b) The tackler must immediately get up or move away from the tackled player and from the ball at once.

**Penalty:** Penalty Kick

(c) The tackler must get up before playing the ball and then may play the ball from any direction.

**Penalty:** Penalty Kick

### 15.5 The tackled player

(a) A tackled player must not lie on, over, or near the ball to prevent opponents from gaining possession of it, and must try to make the ball available immediately so that play can continue.

**Penalty:** Penalty Kick

(b) A tackled player must immediately pass

the ball or release it. That player must also get up or move away from it at once.

**Penalty:** Penalty Kick

(c) A tackled player may release the ball by putting it on the ground in any direction, provided this is done immediately.

**Penalty:** Penalty Kick

(d) A tackled player may release the ball by pushing it along the ground in any direction except forward, provided this is done immediately.

**Penalty:** Penalty Kick

Remember-Tackled players must release the ball immediately.

(e) If opposition players who are on their feet attempt to play the ball, the tackled player must release the ball.

**Penalty:** Penalty Kick

(f) If a tackled player's momentum carries the player into the in-goal, the player can score a try or make a touch down.

(g) If players are tackled near the goal line, these players may immediately reach out and ground the ball on or over the goal line to score a try or make a touch down. A player tackled near the goal line can reach out and ground the ball to score a try.

Explanation of this law will be continued further in the next issue of In Touch.

# News & Events

## Women's Rugby

Ipswich Rugby Club is looking for players to form a new women's team.

The club are keen to promote and support women's rugby within Ipswich and the local area. We ran a women's team in the 1990s known as The Scorpions.

The club was recently approached by Charlotte Mansell who played women's rugby in Devon and Lincolnshire. Charlotte wants to revive women's rugby at Ipswich. As yet we have no fixtures, but want to hear from ladies who are interested in joining the team, and we will take it from there. Woodbridge RFC has a successful team called the Amazons and it is hoped that we can emulate their successes.

We are looking for women over 18. They don't need to have played before as coaching will be given. This will take place on Wednesday evenings from 7.30pm at Humber Doucy Lane. The first training session is scheduled for 13th January.

If anyone is interested please contact Charlotte Mansell on 07955 148619 or email lotzlotte@hotmail.com

## Our sponsors

**Tiger.co.uk**  
Motor insurance comparison



Tiger.co.uk is a unique insurance comparison service that allows customers to shop around for quotes either online or over the phone.

We work with over 90 insurance brands and can help compare prices for car, bike, commercial vehicle or home insurance quotes.

The website is easy to use with a simple 2 page quote form. For those customers who would prefer to speak to someone, or who cannot obtain a quote online, we have a friendly UK based call centre ready to transfer shoppers directly through to our partners. All completely free of charge.

To get a quote visit us at **Tiger.co.uk**. To discuss business or marketing opportunities please contact us on **0845 073 1173**.



[www.ipswichrugby.com](http://www.ipswichrugby.com)

**Contact:** If you have any questions or comments regarding the content of this newsletter or wish to contribute please contact Kate Hughes on 07740 554418 or email: [kate.a.hughes@btconnect.com](mailto:kate.a.hughes@btconnect.com)

Ipswich Rugby Football Club Humber Doucy Lane Ipswich Suffolk IP4 3PZ T: 01473 724072 F: 01473 710439 E: [club@ipswich-rugby.co.uk](mailto:club@ipswich-rugby.co.uk)